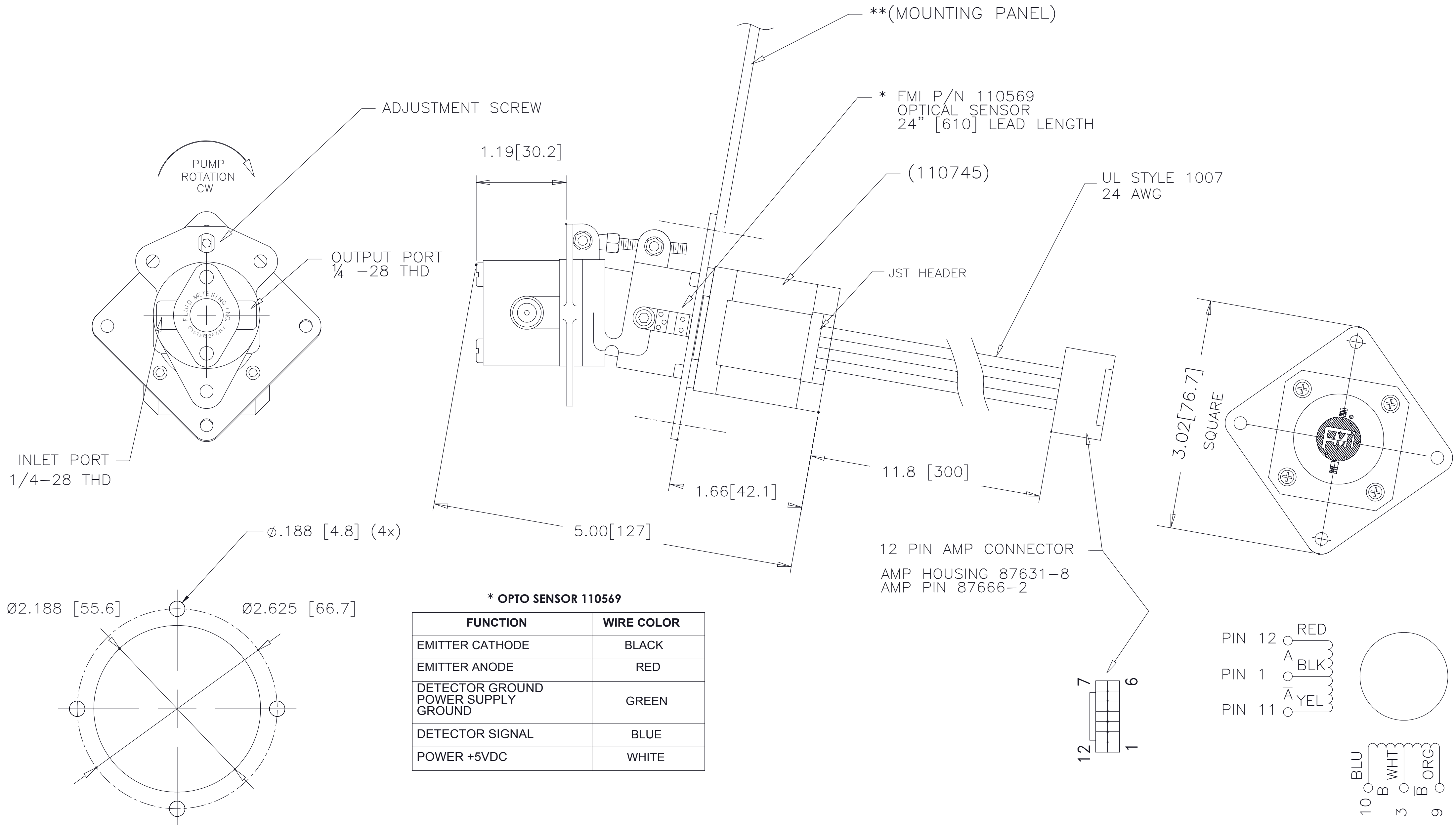
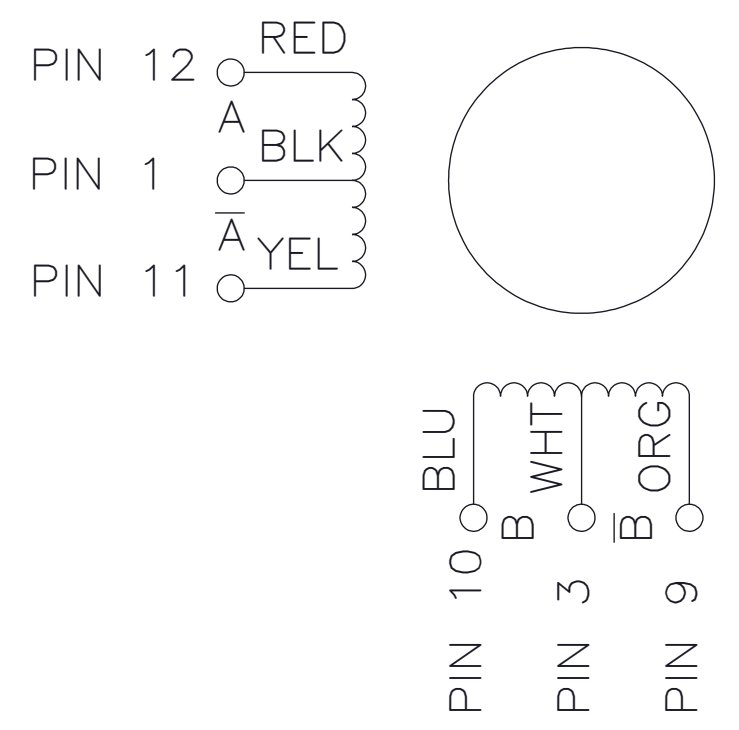


FMI STH-17 FRAME SPECIFICATIONS - SQUARE MOUNT



*** OPTO SENSOR 110569**

FUNCTION	WIRE COLOR
EMITTER CATHODE	BLACK
EMITTER ANODE	RED
DETECTOR GROUND POWER SUPPLY GROUND	GREEN
DETECTOR SIGNAL	BLUE
POWER +5VDC	WHITE



** MOUNTING PANEL CUTOUT


MOTOR P/N 110745
AMBIENT TEMPERATURE RANGE -20°C ~ +50°C.

ELECTRICAL SPECIFICATIONS

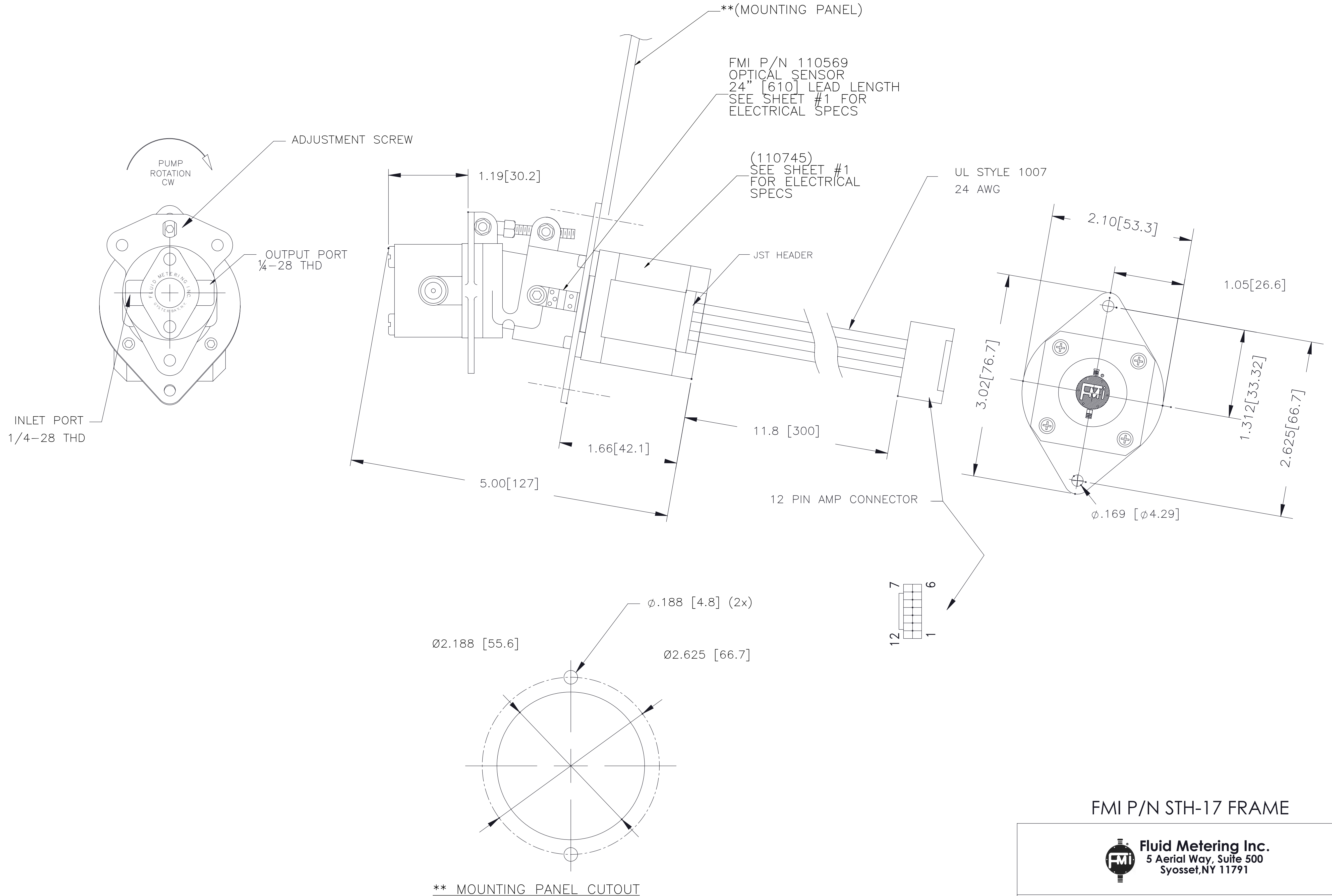
- | | |
|---------------------|-------------------------|
| 1. DUTY | : CONTINUOUS |
| 2. STEP ANGLE | : 1.8 DEG PER FULL STEP |
| 3. NUMBER OF PHASES | : 2 PHASES |
| 4. RATED VOLTAGE | : 4V DC |
| 5. RATED CURRENT | : 1.2A / PHASE |
| 6. INSULATION CLASS | : B (EXCEPT LEAD WIRES) |
| 7. HOLDING TORQUE | : 1700 gm-cm MIN |
| 8. INDUCTANCE | : 2.7 mH PER PHASE |
| 9. RESISTANCE | : 3.3 OHMS ± 10% |
| 10. ROTOR INERTIA | : 62 gm-cm ² |

NOTE: DIMENSIONS ARE IN INCHES [MILLIMETERS]
TOLERANCES UNLESS OTHERWISE SPECIFIED:
.XX = ±.02 [.51]
.XXX = ±.010 [.254]
ANGULAR = ±2°

FMI P/N STH-17 FRAME

 Fluid Metering Inc. 5 Aerial Way, Suite 500 Syosset, NY 11791		
TITLE		STH-745 SQUARE FLANGE PUMP OUTLINE (STANDARD)
DWG NO	600022	REV E
		SHT NO 1 of 2

FMI STH-17 SPECIFICATIONS - OVAL MOUNT



NOTE: DIMENSIONS ARE IN INCHES [MILLIMETERS]
TOLERANCES UNLESS OTHERWISE SPECIFIED:
.XX = ±.02 [.51]
.XXX = ±.010 [.254]
ANGULAR = ±2°

FMI P/N STH-17 FRAME

Fluid Metering Inc.
5 Aerial Way, Suite 500
Syosset, NY 11791

TITLE		
STH-745 OVAL FLANGE PUMP OUTLINE (STANDARD)		
DWG NO	REV	SHT NO 2 OF 2
600022	E	